



e-BRIDGE Job Separator



Software Solution

TOSHIBA
Leading Innovation >>>

Simply and Easily Perform Batch Printing

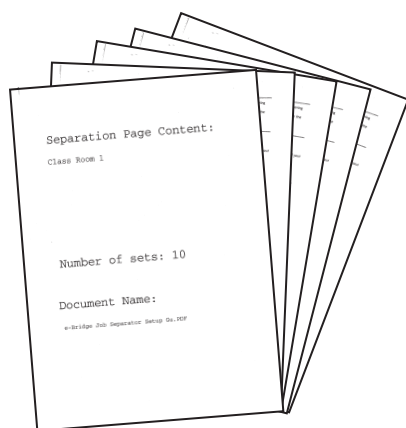
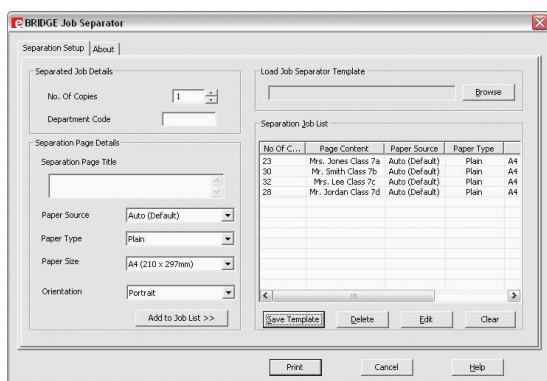
Toshiba e-BRIDGE Job Separator further enhances your Toshiba e-STUDIO MFD by allowing it to simply and easily perform batch printing from any Windows application. It can do this by allowing the user to create multiple sets of a job, divided by a separation page. Think of the time you'll save from sorting large sets of documents into batches.

Scenario

The English faculty needs to print out the Year 7 Final English exam papers for each classroom. Normally the entire year's exam papers would be printed as one set, and then manually divided into individual batches for each class. This wastes a great deal of time in counting and dividing.

With the flexibility of Toshiba e-BRIDGE Job Separator you can simply select the number of copies you need for each classroom, enter separation page details (e.g. batch name, class name) and define any preferred job settings. Once you have entered the settings and details for each job, you can then print to your desired Toshiba MFD. The Toshiba MFD will output the print job with a separation page in between each batch. No more time is wasted on counting and dividing the print job into individual sets.

This is a realistic example of where Toshiba e-BRIDGE Job Separator can save you time and improve efficiency.



Pre-requisites

- **Toshiba Multifunction Device.**
e-STUDIO MFD with print option (if not standard) utilising e-BRIDGE/II architecture.
Check with Toshiba Representative for latest product compatibility.
- **e-BRIDGE Postscript (PS3) print driver.**

System Requirements

- **Display Resolution**
1024 x 768 dots or more
- **Display Colour**
High Colour (16bit) or higher is recommended
- **CPU**
Pentium 266 MHz minimum or faster recommended
- **Memory**
128 megabytes (MB) of RAM or higher recommended
- **Operating System**
Windows XP Professional with Service Pack 2 (32bit)