



- QUICK START GUIDE -

License Agreement.....	2
1. Introduction	9
1.1 About e-BRIDGE Fleet Management System	9
1.2 Trademarks and Copyright	9
1.3 Disclaimer Notice.....	10
2. Preparing Installation	12
2.1 Recommended Environments	12
2.2 Supported OS	13
2.3 EFMS Help	13
3. Installation.....	14
3.1 Installation Flow	14
4. Running Client	26
5. License Registration	28
6. Searching For Devices	33
7. Exiting Client.....	36
8. Uninstallation	37
8.1 EFMS Client & Sever Uninstallation	37
8.2 Java 6 Uninstallation	38
8.3 PostgreSQL Database Server 8.2 Uninstallation	38
9. Security Advice	40

R080720G1400-TTEC

License Agreement

Product: e-BRIDGE Fleet Management System ('EFMS')

This License Agreement is made between you ("You", either an individual or an entity) and TOSHIBA TEC Germany Imaging Systems GmbH having its principal place of business at Carl-Schurz-Str. 7, 41460 Neuss, Germany ("TOSHIBA TEC") and its suppliers with respect to the Product. This Product is proprietary to TOSHIBA TEC and/or its suppliers. Installation of the Product constitutes your acceptance of the terms and conditions of this Agreement. If you do not agree with this Agreement, do not install, copy or use the Product.

1. Grant of License

TOSHIBA TEC grants to you a personal, non-transferable and non-exclusive license to install and use the server components of the Product on one single server. You may use the e-BRIDGE Fleet Management Client component on an unlimited number of Computers on the same network.

This product, fonts (including their typefaces) and related documentation ("Software") are licensed for use with the system CPU on which it was installed ("System") in accordance with the terms contained in this Agreement. You may use one copy of the Software as installed on a single System, and may not copy the Software for any reason except as necessary to use the Software on a single System (Server). Any copies of the Software shall be subject to the conditions of this Agreement.

You may not use the Software, except in accordance with this license.

Updates

TOSHIBA TEC may, at its sole discretion, update the Product at any time. All updated versions of the Product are provided to you on a license exchange basis. You agree that you voluntarily terminate your right to use any previous versions of the Product. The above does not signify that TOSHIBA TEC has an obligation to update the Product.

2. Restrictions

You may not sublicense or transfer all or part of the Product, or any right granted hereunder, to any third party. You may, however, transfer your rights under this License Agreement on a permanent basis provided you transfer this agreement, all copies of the Product, all documentation and retain no copies, and the recipient agrees to the terms of this agreement. Any transfer of the Product must include the most recent update and all prior versions.

This software requires registration in order to operate (see 3. Product Activation). Without proper registration the software will run in evaluation mode for 30 days. When the evaluation period has expired the software will stop its operation.

Furthermore the software is intended to be used with Toshiba multifunctional devices and/or printers.

3. Product Activation

Product Activation is necessary to use all features of the Product. Without a valid Registration key the Product will run in Evaluation Mode for a limited time period only. In order to obtain a the Registration key you will need to send a registration request to TOSHIBA TEC (efms@toshibatec-tgis.com) and provide the following information:

- Server name and IP address
- Server OS version and Java version
- Installation date
- e-BRIDGE Fleet Management System version/build
- Number of requested device licenses
- E-mail address for registration reply e-mail

The following data is optional:

- Country of the registrator
- Number of Toshiba / non-Toshiba devices used
- Training status of the user
- If the user agrees information about software updates will be send to the e-mail address specified.

The e-BRIDGE Fleet Management client software provides an easy-to-use registration dialog for a simplified re-gistration.

4. Privacy Statement

Data that you provide in registration will be stored and used by TOSHIBA TEC or its agents or contractors to support and improve the software, to support its customer relationship with you or for the purpose of conducting market research or surveys. It will be kept confidential. TOSHIBA TEC does not and will not sell, trade or otherwise transfer personally identifiable information that you voluntarily provide in any registration. Agents or contractors of TOSHIBA TEC who are given access to your personal information for the above mentioned purpose will be required to keep the information confidential and not use it for any other purpose than to carry out the services they are performing for TOSHIBA TEC.

To prevent unauthorized access, maintain data accuracy, and ensure the correct use of information, TOSHIBA TEC has put in place appropriate physical, electronic, and managerial procedures to safeguard and secure the information that is collected online.

5. Reverse Engineering

You agree that you will not attempt to decompile, reverse engineer, modify translate or disassemble the Product in whole or in part, subject to the mandatory provisions of the applicable law.

6. Back-up Copy

Notwithstanding the foregoing, you may make a single back-up copy of the Product solely for archival purpose.

7. Copyright

The title and intellectual property rights in and to the Product and accompanying written materials will remain the exclusive property of TOSHIBA TEC and/or its suppliers, and you will not acquire any rights to the Product and accompanying written materials, except the license expressly set forth herein. You will be held legally responsible for any copyright infringement, unauthorized transfer, reproduction or use of the Software or its documentation.

8. Warranty

All warranties, conditions and other terms implied by law are, to the fullest extent permitted by law, excluded and no such implied warranties are given or apply in relation to the Product.

The Product is supplied "as is". TOSHIBA TEC does not warrant that the Product will carry no errors nor that the Product will meet your requirements or that the Product will work properly when used concurrently with any other hardware or software.

TOSHIBA TEC will not take on any responsibility for damages, either direct or indirect, including, without limitation, damages for loss of business profits, business interruption, loss of business information, or any other pecuniary loss resulting from the use of the Product, and damages caused by the possible errors in the Product.

Except as expressly provided herein TOSHIBA TEC makes no other warranties, either expressed or implied, regarding the Product, its merchantability, or its fitness for any particular purpose, and the entire risk as to the quality and the performance of the Product lies with you.

The limitation of liability set forth above shall not apply to any mandatory statutory liability, in particular, to liability under German Product Liability Act, liability for assuming a specific guarantee, or liability for culpably caused personal injuries or death.

9. Limitation of Liability

The exclusion and limitations of liability referred to in this notice shall be effective to the fullest extent permissible at law. For the avoidance of doubt, nothing in this notice shall be taken to exclude or limit TOSHIBA TEC's liability for death or personal injury caused by TOSHIBA TEC's negligence or TOSHIBA TEC's fraudulent misrepresentation.

TOSHIBA TEC and its suppliers disclaim responsibility for the installation and/or use of this Software, and for the results obtained by using this Software.

TOSHIBA TEC shall not be liable for any loss, cost, expense, claim or damage whatsoever caused by any of the following:

- (a) use or handling of the Product otherwise than in accordance with the manuals, including but not limited to Operator's Manual, User's Guide, and/or incorrect or careless handling or use of the Product;
- (b) any cause which prevents the Product from operating or functioning correctly which arises from or is attributable to either acts, omissions, events or accidents beyond the reasonable control of TOSHIBA TEC including without limitation acts of God, war, riot, civil commotion, malicious or deliberate damage, fire, flood, or storm, natural calamity, earthquakes, abnormal voltage or other disasters; or
- (c) use in any operating environment or with settings other than those recommended by TOSHIBA TEC.

TOSHIBA TEC shall not be liable to you for:

- (a) loss of profits; loss of sales or turnover; loss of or damage to reputation; loss of production; loss of anticipated savings; loss of goodwill or business opportunities; loss of customers; loss of, or loss of use of, any software or data; loss under or in relation to any contract; or
- (b) any special, incidental, consequential or indirect loss or damage, costs, expenses, financial loss or claims for consequential compensation; whatsoever and howsoever caused which arise out of or in connection with the Product or the use or handling of the Product even if TOSHIBA TEC is advised of the possibility of such damages.

TOSHIBA TEC shall not be liable for any loss, cost, expense, claim or damage caused by any inability to use (including, but not limited to failure, malfunction, hang-up, virus infection or other problems) which arises from use of the Product with hardware, goods or software which TOSHIBA

TEC has not directly or indirectly supplied.

In any event, TOSHIBA TEC 's sole obligation or liability under this Agreement, regardless of the nature of the events that resulted in such an obligation or liability, shall not exceed the purchase price originally paid for the Product.

10. Unintended Usage

You acknowledge that the Product is neither intended nor warranted for usage in system that requires extraordinarily high quality and/or reliability or a malfunction or failure of which may cause loss of human life or bodily injury ("Unintended Usage"). Unintended Usage includes among others nuclear facility, airplane navigation or communication system, mass transportation system, traffic control system, weapon system, medical instruments.

11. Term

This Agreement shall remain in effect on a perpetual basis; provided, however, that TOSHIBA TEC shall have the right to terminate this Agreement immediately if you fail to comply with any terms and conditions of this Agreement. Within one (1) month after termination, you shall return the Product and accompanying written materials to TOSHIBA TEC, together with all copies in any form.

12. Export Control

This Agreement involves products and/or technical data that may be controlled under export control laws and regulations of Germany, the United States, Australia, Japan and any other country. You agree to comply with such applicable export laws and regulations, and shall not, directly or indirectly, export or re-export Products or any part thereof, any information, technical data, or any direct product thereof, to any destination or country restricted or prohibited by such laws and regulations, unless properly authorized by the appropriate government authorities.

13. Governing Law

This Agreement will be governed by and construed in accordance with the applicable laws of Germany. Düsseldorf Court shall have exclusive jurisdiction over all disputes relating to this Agreement.

This Agreement will not be governed by the conflict law rules of any jurisdiction of the United Nations Convention on Contracts for the International Sale of Goods, the application of which is expressly excluded.

14. U.S. Government Restricted Rights

The Software is provided with RESTRICTED RIGHTS. Use, duplication or disclosure by the U.S.

Government is subject to restrictions set forth in subdivision (b) (3) (ii) or (c) (i) (ii) of the Rights in Technical Data and Computer Software Clause set forth in 252.227-7013, or 52.227-19 (c) (2) of the DOD FAR, as appropriate. Contractor/Manufacturer is TOSHIBA TEC Corporation, 2-17-2, Higashi Gotanda, Shinagawa-ku, Tokyo, 141-8664, Japan.

Management Items regarding Security (Recommended)

1. Disposal of Device

Regarding the disposition of general devices (personal computer, etc.) and storage media (floppy disk, magneto optical disk, etc.), it is recommended to erase data from storage devices such as hard disk drive by using a tool, etc. under the responsibility of a user.

2. Clear Desk Policy/Clear Screen Policy

There is a possibility information may leak from monitor screens or documents left alone. To prevent and minimize damages and loss from such information leakage and to protect terminal equipment (personal computers you are using) from unauthorized disclosure or change, theft or destruction, it is recommended to use monitor screens to be activated with a password and not to leave printed documents on the desk.

3. Virus Protection

To prevent devices from being infected by a virus, use a resident anti-virus software.

4. Privacy Policy

Do not disclose, leak, misuse, or privately use any customer information (such as setting information).

5. Log-in Operation

Refer to page 24 in this Quick Start Guide for the log-in operation.

6. ID, Password Control, User Registration/Cancellation

Do not tell any unauthorized personnel about a given password.

7. Use of Password, Protection of Uninhabited Device

Do not use the same password with others or write a password on a document which others can easily see. When you leave a desk for a while, implement Clear Screen Policy and Clear Disk Policy, or shut it down to prevent unauthorized accesses.

8. Mobile Computing, Teleworking

Do not use mobile computing or teleworking. If there is a need to use it, please make an agreement which you should abide by.

9. Accident/Failure/ Malfunction Report Process and Responsibilities

Despite our complete security control, if any accident, failure, or malfunction is found, please report it to your contracted maintenance company or dealer.

THE LICENSE AGREEMENT OF INCLUDED 3RD PARTY SOFTWARE

This product ("EFMS") includes software developed by the Apache Software Foundation (<http://www.apache.org/>).

EFMS includes **log4j**, **snmp4j**, **commons-codec**, **commons-httpclient** and **commons-net** which are licensed under the Apache License, Version 2.0 (the "License"); you may not use these files except in compliance with the License. You may obtain a copy of the License at <http://www.apache.org/licenses/LICENSE-2.0>

Unless required by applicable law or agreed to in writing, software distributed under the License is distributed on an "AS IS" BASIS, WITHOUT WARRANTIES OR CONDITIONS OF ANY KIND, either express or implied. See the License for the specific language governing permissions and limitations under the License.

EFMS includes **PostgreSQL** and **JDBC PostgreSQL driver**, which are Copyright © 1996-2006 by the PostgreSQL Global Development Group and are distributed under the terms of the license of the University of California below.

Permission to use, copy, modify, and distribute PostgreSQL, and JDBC PostgreSQL driver and their documentation for any purpose, without fee, and without a written agreement is hereby granted, provided that the above copyright notice and this paragraph and the following two paragraphs appear in all copies.

IN NO EVENT SHALL THE UNIVERSITY OF CALIFORNIA BE LIABLE TO ANY PARTY FOR DIRECT, INDIRECT, SPECIAL, INCIDENTAL, OR CONSEQUENTIAL DAMAGES, INCLUDING LOST PROFITS, ARISING OUT OF THE USE OF THIS SOFTWARE AND ITS DOCUMENTATION, EVEN IF THE UNIVERSITY OF CALIFORNIA HAS BEEN ADVISED OF THE POSSIBILITY OF SUCH DAMAGE.

THE UNIVERSITY OF CALIFORNIA SPECIFICALLY DISCLAIMS ANY WARRANTIES, INCLUDING, BUT NOT LIMITED TO, THE IMPLIED WARRANTIES OF MERCHANTABILITY AND FITNESS FOR A PARTICULAR PURPOSE. THE SOFTWARE PROVIDED HEREUNDER IS ON AN "AS-IS" BASIS, AND THE UNIVERSITY OF CALIFORNIA HAS NO OBLIGATIONS TO PROVIDE MAINTENANCE, SUPPORT, UPDATES, ENHANCEMENTS, OR MODIFICATIONS.

EFMS includes **JavaMail** and **JavaBeans Activation Framework (JAF)** which are copyright 1994-2007 Sun Microsystems, Inc. All Rights Reserved. Redistribution and use in source and binary forms, with or without modification, are permitted provided that the following conditions are met:

- Redistribution of source code must retain the above copyright notice, this list of conditions and the following disclaimer.
- Redistribution in binary form must reproduce the above copyright notice, this list of conditions and the following disclaimer in the documentation and/or other materials provided with the distribution.

Neither the name of Sun Microsystems, Inc. or the names of contributors may be used to

endorse or promote products derived from this software without specific prior written permission.

This software is provided "AS IS," without a warranty of any kind. ALL EXPRESS OR IMPLIED CONDITIONS, REPRESENTATIONS AND WARRANTIES, INCLUDING ANY IMPLIED WARRANTY OF MERCHANTABILITY, FITNESS FOR A PARTICULAR PURPOSE OR NON-INFRINGEMENT, ARE HEREBY EXCLUDED. SUN MICROSYSTEMS, INC. ("SUN") AND ITS LICENSORS SHALL NOT BE LIABLE FOR ANY DAMAGES SUFFERED BY LICENSEE AS A RESULT OF USING, MODIFYING OR DISTRIBUTING THIS SOFTWARE OR ITS DERIVATIVES. IN NO EVENT WILL SUN OR ITS LICENSORS BE LIABLE FOR ANY LOST REVENUE, PROFIT OR DATA, OR FOR DIRECT, INDIRECT, SPECIAL, CONSEQUENTIAL, INCIDENTAL OR PUNITIVE DAMAGES, HOWEVER CAUSED AND REGARDLESS OF THE THEORY OF LIABILITY, ARISING OUT OF THE USE OF OR INABILITY TO USE THIS SOFTWARE, EVEN IF SUN HAS BEEN ADVISED OF THE POSSIBILITY OF SUCH DAMAGES.

You acknowledge that this software is not designed, licensed or intended for use in the design, construction, operation or maintenance of any nuclear facility.

EFMS includes **iText** which is developed by Bruno Lowagie and is copyright © 1999-2007 by Bruno Lowagie, Adolf Baeyensstraat 121, 9040 Gent, BELGIUM, All Rights Reserved.

The contents of this file (which is also available at: <http://www.lowagie.com/iText/>) are subject to the Mozilla Public License Version 1.1 (the "License"); you may not use this file except in compliance with the License. You may obtain a copy of the License at <http://www.mozilla.org/MPL/>

Software distributed under the License is distributed on an "AS IS" basis, WITHOUT WARRANTY OF ANY KIND, either express or implied. See the License for the specific language governing rights and limitations under the License.

EFMS includes **jFreeChart** and **jCommon** which are copyright 2000-2008, by Object Refinery Limited and Contributors.

jFreeChart and jCommon are free software: you can redistribute them and/or modify them under the terms of the GNU Lesser General Public License as published by the Free Software Foundation, either version 3 of the License, or (at your option) any later version.

jFreeChart and jCommon are distributed in the hope that they will be useful, but WITHOUT ANY WARRANTY; without even the implied warranty of MERCHANTABILITY or FITNESS FOR A PARTICULAR PURPOSE. See the GNU Lesser General Public License for more details.

You should have received a copy of the GNU Lesser General Public License along with EFMS. If not, see <<http://www.gnu.org/licenses/>>.

TOSHIBA TEC Germany Imaging Systems GmbH
Carl-Schurz-Str.7
41460 Neuss
GERMANY

1. Introduction

1.1 About e-BRIDGE Fleet Management System

e-BRIDGE Fleet Management System, hereafter called “EFMS”, allows you to monitor the counter information and device status of devices that are connected in your network, and administrate the devices such as cloning the device settings.

1.2 Trademarks and Copyright

Trademarks

The followings are trademarks written in this guide.

- The official name of Windows 2000 is Microsoft Windows 2000 Operating System.
- The official name of Windows XP is Microsoft Windows XP Operating System.
- The official name of Windows Vista is Microsoft Windows Vista Operating System.
- The official name of Windows Server 2003 is Microsoft Windows Server 2003 Operating System.
- Microsoft, Windows, Windows NT, and the brand names and product names of other Microsoft products are trademarks of Microsoft Corporation in the US and other countries.
- Copyright © 1996-2007, The PostgreSQL Global Development Group
- Java is either a trademark or registered trademark of Sun Microsystems, Inc.
- Other company names and product names in this manual are the trademarks of their respective owners.

Copyright

© 2008 TOSHIBA TEC CORPORATION All rights reserved

Under the copyright laws, this manual cannot be reproduced in any form without prior written permission of TTEC. No patent liability is assumed, however, with respect to the use of the information contained herein.

1.3 Disclaimer Notice

The following notice sets out the exclusions and limitations of liability of TOSHIBA TEC CORPORATION (including its employees, agents and sub-contractors) to any purchaser or user ('User') of the e-BRIDGE Fleet Management System, including its accessories, options and bundled software ('Product').

1. The exclusion and limitations of liability referred to in this notice shall be effective to the fullest extent permissible at law. For the avoidance of doubt, nothing in this notice shall be taken to exclude or limit TOSHIBA TEC CORPORATION's liability for death or personal injury caused by TOSHIBA TEC CORPORATION's negligence or TOSHIBA TEC CORPORATION's fraudulent misrepresentation.
2. All warranties, conditions and other terms implied by law are, to the fullest extent permitted by law, excluded and no such implied warranties are given or apply in relation to the Products.
3. TOSHIBA TEC CORPORATION shall not be liable for any loss, cost, expense, claim or damage whatsoever caused by any of the following:
 - (a) use or handling of the Product otherwise than in accordance with the manuals, including but not limited to Operator's Manual, User's Guide, and/or incorrect or careless handling or use of the Product;
 - (b) any cause which prevents the Product from operating or functioning correctly which arises from or is attributable to either acts, omissions, events or accidents beyond the reasonable control of TOSHIBA TEC CORPORATION including without limitation acts of God, war, riot, civil commotion, malicious or deliberate damage, fire, flood, or storm, natural calamity, earthquakes, abnormal voltage or other disasters;
 - (c) additions, modifications, disassembly, transportation, or repairs by any person other than service technicians authorized by TOSHIBA TEC CORPORATION; or
 - (d) use of paper, supplies or parts other than those recommended by TOSHIBA TEC CORPORATION.
4. Subject to paragraph 1, TOSHIBA TEC CORPORATION shall not be liable to Customer for:
 - (a) loss of profits; loss of sales or turnover; loss of or damage to reputation; loss of production; loss of anticipated savings; loss of goodwill or business opportunities; loss of customers; loss of, or loss of use of, any software or data; loss under or in relation to any contract;or

(b) any special, incidental, consequential or indirect loss or damage, costs, expenses, financial loss or claims for consequential compensation;

whatsoever and howsoever caused which arise out of or in connection with the Product or the use or handling of the Product even if TOSHIBA TEC CORPORATION is advised of the possibility of such damages.

TOSHIBA TEC CORPORATION shall not be liable for any loss, cost, expense, claim or damage caused by any inability to use (including, but not limited to failure, malfunction, hang-up, virus infection or other problems) which arises from use of the Product with hardware, goods or software which TOSHIBA TEC CORPORATION has not directly or indirectly supplied.

2. Preparing Installation

Before installing EFMS, please confirm that your PC satisfies the requirements below.

2.1 Recommended Environments

The required environments are shown as below to use EFMS.

Server

Item	Recommended Environments
CPU	Intel® Pentium® IV 1.6GHz or higher
Memory	1GB or more
HDD	For program: Minimum 400MB available space (including system logs) For database: Minimum 33MB available space (for one connected device) * For details, please see "About Database Drive" below.

Client

Item	Recommended Environments
CPU	Intel® Pentium® III 800MHz or higher
Memory	512MB or more (1GB or more recommended)
HDD	For program: Minimum 30MB available space

■ About Database Drive

Standard Space for PostgreSQL data drive

Required space in case about **200** departments in each device

Number of Device	MB	GB
1	67.0	
5	335.0	
10	669.9	
20	1339.8	1.31
50	3349.5	3.27
100	6699.0	6.54
500	33495.1	32.71

Required space in case about **500** departments in each device

Number of Device	MB	GB
1	166.6	
5	833.0	
10	1666.0	1.63
20	3332.0	3.25
50	8330.0	8.13
100	16660.0	16.27

Note

Please consider to keep the space 2 – 5% larger than the size above to save the back up data.

2.2 Supported OS

EFMS can be installed on the following operating systems.

- Microsoft® Windows® 2000 Professional SP4
- Microsoft® Windows® 2000 Server SP4
- Microsoft® Windows® XP Professional SP2&SP3
- Microsoft® Windows® Server 2003 SP2
- Microsoft® Windows® Vista SP0&SP1

2.3 EFMS Help

Please use Microsoft® Internet Explorer to view EFMS Help.

3. Installation

This section describes how to install EFMS.

Before installing EFMS, please confirm that your PC or Server satisfies the requirements described in “2. Preparing Installation”.

3.1 Installation Flow

The installation flow of EFMS is as below.

Install EFMS Server

Note

- If the Java Runtime Environment (version 1.6 or later) is not installed on your PC, you can either download the Java Runtime Environment version 1.6 from the Java web site (<http://www.java.com/>), and install it on your PC or have it installed by the EFMS installer.
For instructions, refer to “Installing Java Runtime Environment”.
- If the PostgreSQL server (version 8.2 or later) is not installed on your PC, you can either download the version 1.6 series from the Postgre web site (<http://www.postgresql.org/>) and install it on your PC or have it installed by the EFMS installer. (This is tested only for v8.2.6.)
For instructions, refer to “Installing PostgreSQL”.
- If the PostgreSQL server version 8.2 or lower is installed, it is not guaranteed to successfully backup or restore the data since there is a problem of the compatibility of versions.

1. Double-click the installer file of EFMS Server.

2. Prerequisites Wizard starts.

➡ For instructions, please refer to “Starting Prerequisites Wizard”.

2-1. Install or update Java Runtime Environment.

➡ For instructions, please refer to “Installing Java Runtime Environment”.

2-2. Install or update PostgreSQL.

➡ For instructions, please refer to “Installing PostgreSQL”.

Note

If the Java Runtime Environment and PostgreSQL have been installed on your PC, Step 2, Step 2-1, and Step 2-2 will be skipped.

➡ For instructions of newly installation, refer to “Installing PostgreSQL”.

➡ For instructions of inheriting existing EFMS data or Initializing EFMS data, refer to “Inheriting or Initializing Existing EFMS Data”.

3. Installing EFMS Server is started.

- ➔ For instructions, please refer to “Installing EFMS Server”.

Installing EFMS Client

Note

If the Java Runtime Environment (version 1.6 or later) is not installed on your PC, you can either download the Java Runtime Environment version 1.6 from the Java web site (<http://www.java.com/>), and install it on your PC or have it installed by the EFMS installer.

For instructions, refer to “Installing Java Runtime Environment”.

1. Double-click the installer file of EFMS Client.

- ➔ For instructions, please refer to “Installing EFMS Client”.

2. Prerequisites Wizard starts.

- ➔ For instructions, please refer to “Starting Prerequisites Wizard”.

2-3. Install or update Java Runtime Environment.

- ➔ For instructions, please refer to “Installing Java Runtime Environment”.

Note

If Java Runtime Environment has been installed on your PC, Step 2 and Step 2-1 will be skipped.

3. Installing EFMS Client is started.

- ➔ For instructions, please refer to “Installing EFMS Client”.

Starting Prerequisites Wizard

Note

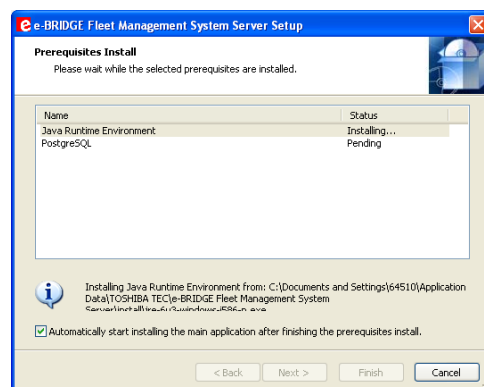
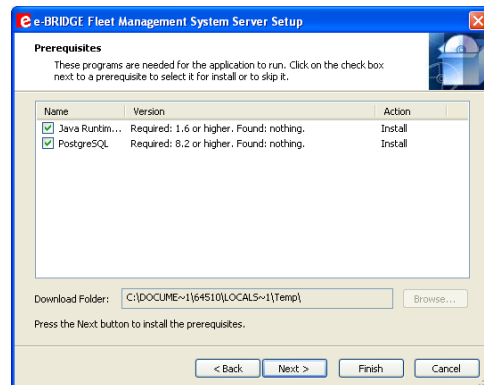
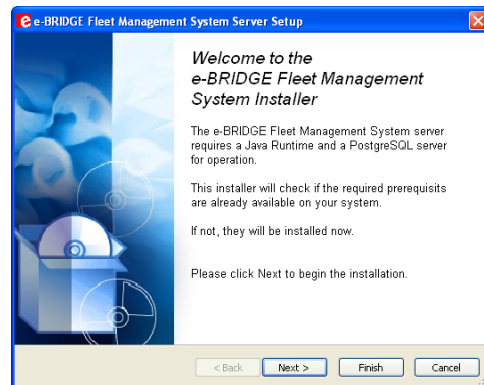
When Java Runtime Environment and PostgreSQL have been installed on your PC, the Prerequisites Wizard does not appear and start EFMS Server or EFMS Client installation.

1. Prerequisites Wizard is started.
2. Click [Next].
3. Check the programs that you want to install and click [Next].

Note

“PostgreSQL” is displayed only when installing the EFMS Server.

4. The installation wizard of the program selected in the previous step.
 - ➔ When Java Runtime Environment is selected in the previous step, please refer to “Installing Java Runtime Environment”.
 - ➔ When PostgreSQL is selected in the previous step, please refer to “Installing PostgreSQL”.



Installing Java Runtime Environment

This section describes the installation of Java Runtime Environment.

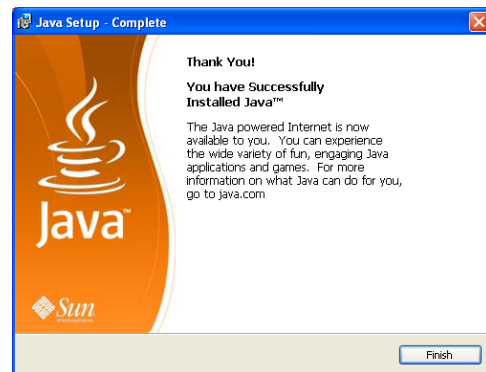
1. Click [Accept].
 - ➔ Installing Java Runtime Environment is started.



Note

The license agreement can be displayed by clicking [View License Agreement]. When you display this screen, click [Close] to continue the installation.

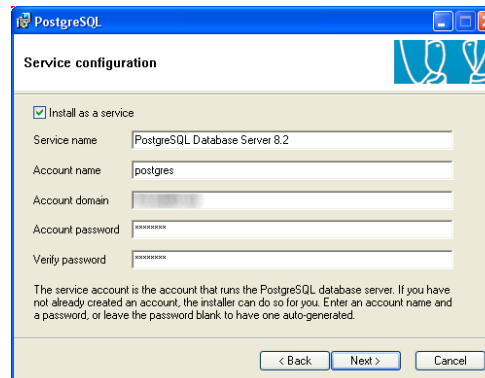
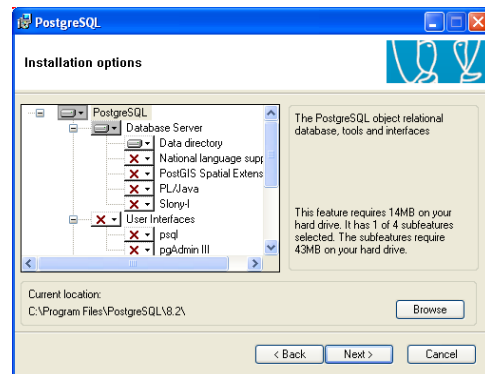
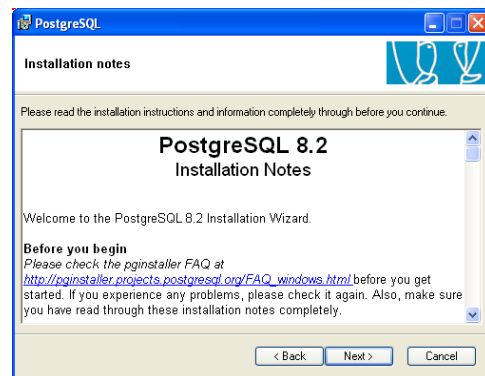
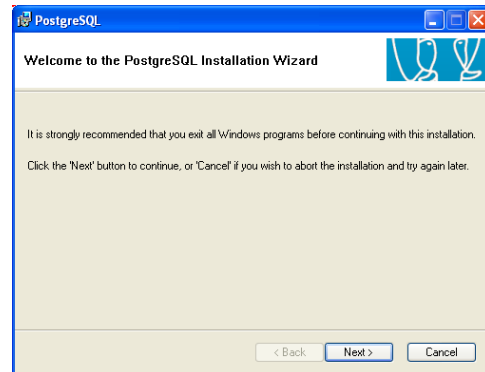
2. Click [Finish].
 - ➔ Installing Java Runtime Environment is finished.



Installing PostgreSQL

This section describes the installation of PostgreSQL.

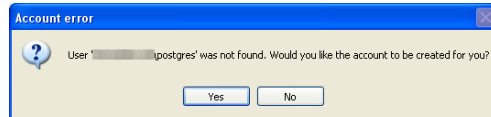
1. Welcome to the PostgreSQL Installation Wizard appears.
Click [Next].
2. Installation Notes appears.
Click [Next].
3. Installation Option appears.
Click [Next] without changing the installation options.
4. Service Configuration appears.
Enter the items as below and click [Next].



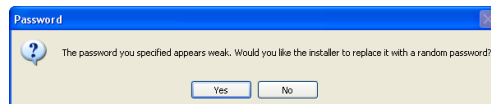
Items	Descriptions
Service name	Do not change.

Items	Descriptions
Account name	Do not change.
Account domain	Do not change.
Account password	Enter the account password as preferred.
Verify password	Enter the account password again.

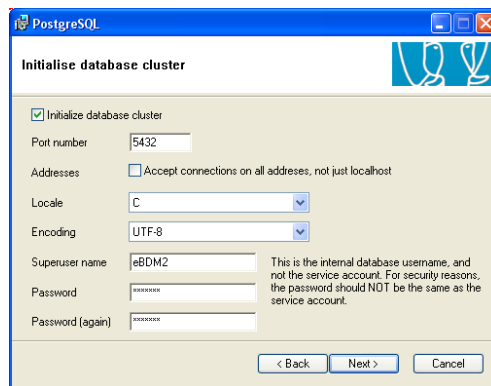
Note When the Account error dialog box appears, click [Yes] to create the account.



Note When the Password dialog box appears, click [No].

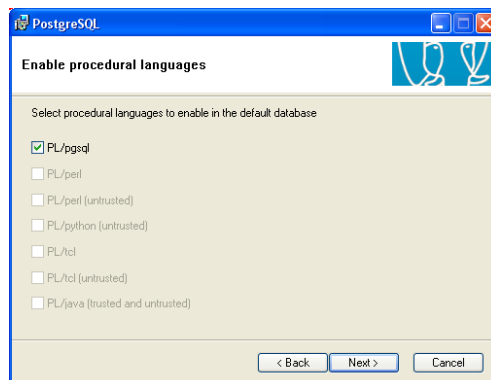


5. Initialize database cluster appears.
Enter the items as below and click [Next].

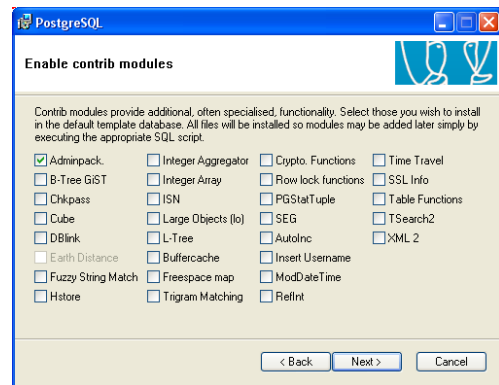


Items	Descriptions
Port number	Do not change.
Addresses	Do not change.
Locale	Do not change.
Encoding	Do not change.
Superuser name	Do not change.
Password	Enter "toshiba".
Password (again)	Enter "toshiba".

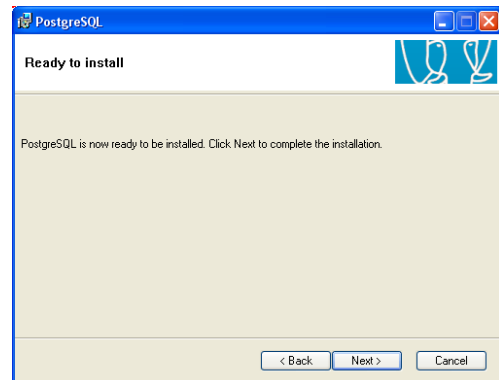
6. Enable procedural languages appears.
Click [Next].



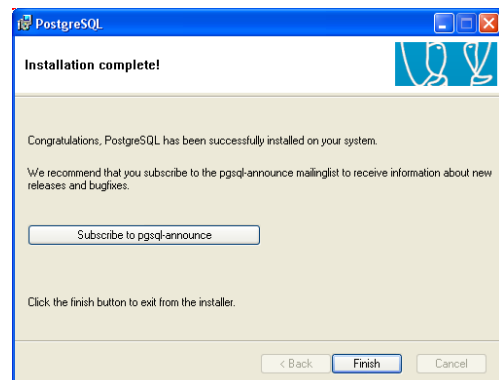
7. Enable contribution modules appears.
Click [Next].



8. Ready to Install appears.
Click [Next].
➔ Installing files is started.



9. Click [Finish].
➔ Installing PostgreSQL is finished.

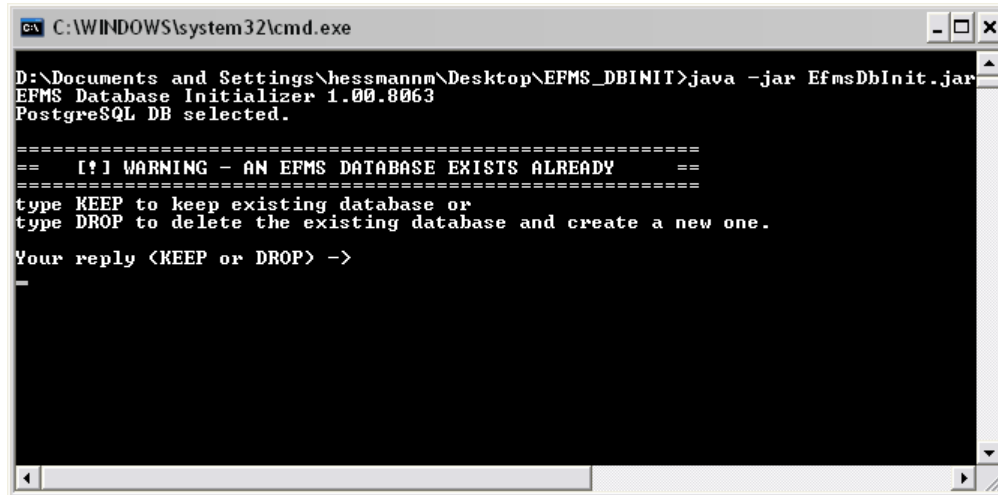


Inheriting or Initializing Existing EFMS Data

If the EFMS data already exists in the server, the following screen is displayed.

To inherit the existing EFMS data, input “**KEEP**” and press the [ENTER] key.

To initialize the existing EFMS data, input “**DROP**” and press the [ENTER] key.



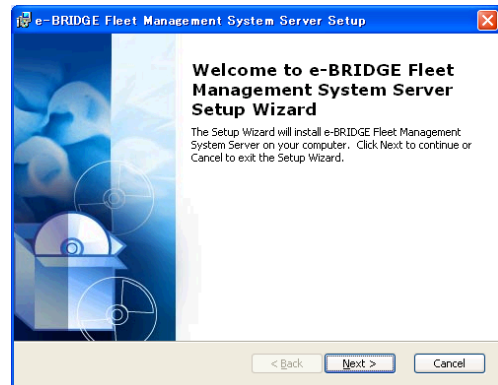
```
C:\WINDOWS\system32\cmd.exe
D:\Documents and Settings\hessmannm\Desktop\EFMS_DBINIT>java -jar EfmsDbInit.jar
EFMS Database Initializer 1.00.8063
PostgreSQL DB selected.

=====
!! WARNING - AN EFMS DATABASE EXISTS ALREADY !!
=====
type KEEP to keep existing database or
type DROP to delete the existing database and create a new one.
Your reply <KEEP or DROP> ->
_
```

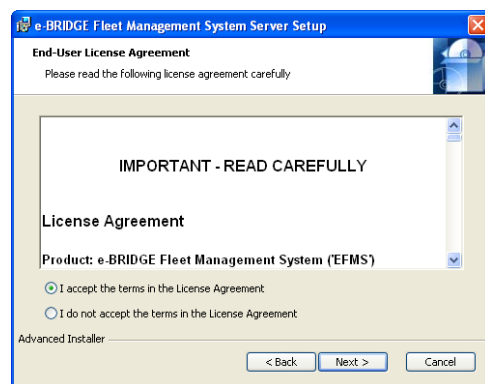
Installing EFMS Server

This section describes the installation of EFMS Server.

1. Click [Next].

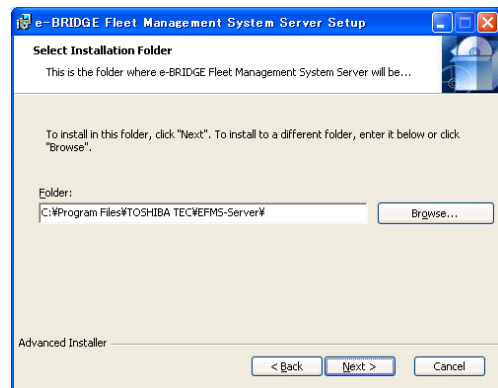


2. End-User License Agreement appears.
3. Read License Agreement carefully, and select "I accept the license Agreement".
4. Click [Next].



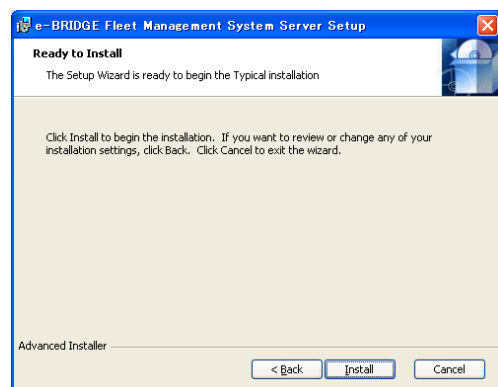
5. Select Installation Folder appears.
Click [Next].

Note When you want to change the installed folder, click [Browse] and specify the folder.

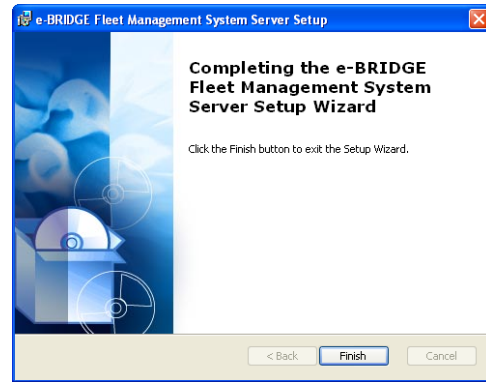


6. Click [Install].
➔ Installing files is started.

Note The Command Prompt is launched during the installation. When the message to tell you clicking any to continue is displayed, Press any key.



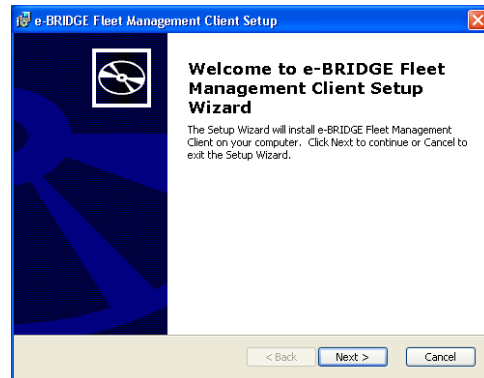
7. Click [Finish].
 - ➔ The installation is finished.



Installing EFMS Client

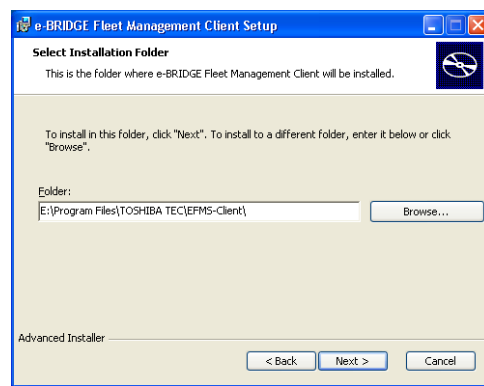
This section describes the installation of EFMS Client.

1. Click [Next].

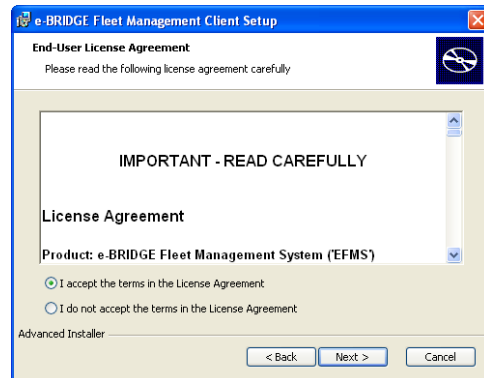


2. Select Installation Folder appears.
Click [Next].

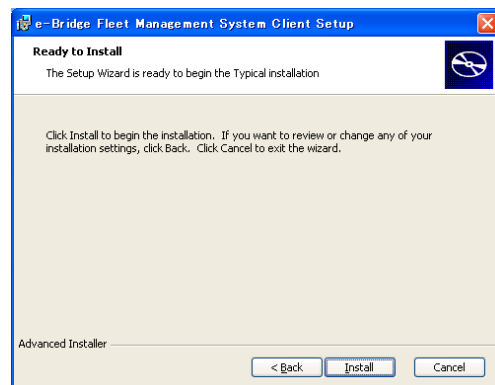
Note When you want to change the installed folder, click [Browse] and specify the folder.



3. End-User License Agreement appears.
4. Read License Agreement carefully, and check "I accept the terms in the License Agreement".
5. Click [Next].



6. Click [Install].
➔ Installing files is started.



7. Click [Finish].
 - ➔ Installing EFMS Client is finished.

Note

You can run EFMS Client by checking “Launch e-BRIDGE Fleet Management Client” and click [Finish].



4. Running Client

Run the EFMS Client to manage the devices using EFMS.

To run the EFMS Client, follow the procedure below.

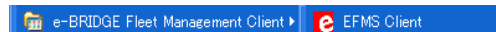
Running EFMS Client

1. Select [Start] - [All Programs] - [e-BRIDGE Fleet Management System Client] - [EFMS Client].

➔ The Login to server dialog box appears.

2. Enter the server name, login name, and password and click [Login].

➔ The Registration Reminder dialog box appears if the license registration has not been done.

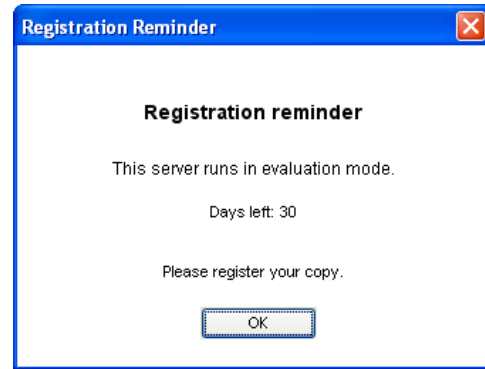


Items	Descriptions
Server name	Enter the server name or IP address that EFMS Server is installed.
Login name	Enter the login name. Enter "admin" which is the default administrator login name when you configure the initial settings.
Password	Enter the login password. Enter "toshiba" which is the default administrator login password when you configure the initial settings.
Language	Select the language.

Note

Immediately after the EFMS Server has been started, a period of 60 seconds must be passed before it can accept the first client to login.

3. Click [OK].
 - ➔ EFMS Client is started.

**Note**

Please register a license before the EFMS evaluation period is expired. When you have been using EFMS in evaluation mode for more than 30 days, the EFMS service shuts down automatically. In such case no client login is possible. In order to still login a register your current installation of EFMS, please manually restart the EFMS service in your server's management console. Then the server runs for a grace period of 15 minutes, which allows you to login by the EFMS Client and to complete the registration.

5. License Registration

In order to use EFMS after 30 days from the installation, the license registration must be performed.

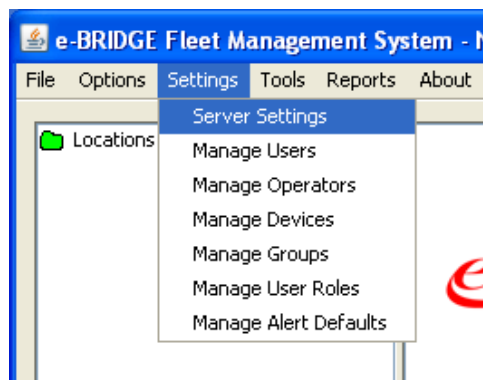
Registering License

Note

This procedure should be performed by logging on with the default administrator login name, “admin”.

1. Select [Settings] - [Server Settings].

- ➡ The Server Setting dialog box appears.



2. Click [Register].

- ➡ Each item will be editable.
- ➡ There are two methods to get a registration key. For each procedure, please see “Getting Registration Key”.

Getting Registration Key

There are two methods to get the registration key.

- ➔ Case1 : When Getting Registration Key From Client Directly
- ➔ Case2 : When Getting Registration Key Using Mail Application

Note

In order to get a registration key from the client directly, the E-mail Settings must be configured.

Case1 : When Getting Registration Key From Client Directly

This method allows users to send a request mail to get the registration key directly from the Client.

1. Enter an e-mail address to receive the registration key in [Registration key receiver address].
2. Enter the total number of devices to be managed in the system in [Number of requested licenses].
3. Select your region in [Your region].
4. Enter the number of Toshiba devices to be managed in the system in [Number of Toshiba devices].
5. Enter the number of other vendor's devices to be managed in the system in [Number of non-Toshiba devices].
6. If you had training on EFMS, check [Yes] at [I had a training on EFMS]. Otherwise, check [No].
7. If you want to receive the software update information by e-mail, check [please inform me about software updates by email] and enter an e-mail address in [Email address].

Remark

To specify multiple e-mail addresses, divide with a comma.

8. Click [Send by mail].
 - ➔ The e-mail message with the registration key will be send to the entered e-mail address. Check that the e-mail message is received using a mail application.
 - ➔ Continue the procedure to enter the registration key.
- Please refer to “Entering Registration Key And Finish License Registration”.

Case2: When Getting Registration Key Using Mail Application

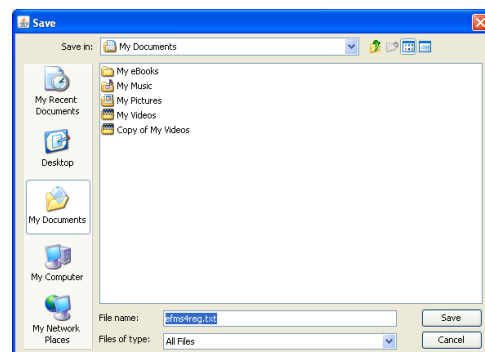
This method allows users to send a request file to get the registration key using a mail application.

1. Enter an e-mail address to receive the registration key in [Registration key receiver address].
2. Enter the total number of devices to be managed in the system in [Number of requested licenses].
3. Select your region in [Your region].
4. Enter the number of Toshiba devices to be managed in the system in [Number of Toshiba devices].
5. Enter the number of other vendor's devices to be managed in the system in [Number of non-Toshiba devices].
6. If you had training on EFMS, check [Yes] at [I had a training on EFMS]. Otherwise, check [No].
7. If you want to receive the software update information by e-mail, check [please inform me about software updates by email] and enter an e-mail address in [Email address].

Remark To specify multiple e-mail addresses, divide with a comma.

8. Click [Save to file].
 - ➔ The Save dialog box appears.
9. Specify the folder where the file is saved, and click [Save].
 - ➔ The Information dialog box appears.

Note Do not change the file name.



- 10.** Write down the e-mail address displayed in the message and click [OK].



Note The e-mail address displayed here is the e-mail address that the request file to be sent.

- 11.** Launch the mail application and send a new e-mail with attaching the saved file to the e-mail address displayed in previous step.
- ➡ After sending the request file, the e-mail message with the registration key will be send to the entered e-mail address. Check that the e-mail message is received using a mail application.
 - ➡ Continue the procedure to enter the registration key.
Please refer to “Entering Registration Key And Finish License Registration”.

Entering Registration Key And Finish License Registration

To finish the license registration, enter the registration key.

After finishing the license registration, the Registration Reminder dialog box is no longer displayed.

1. Click [Add key].
 - ➡ [Registration key] will be editable.

The screenshot shows the 'Server Settings' dialog box with the 'Registration/License' tab selected. The 'Registration key' field is highlighted, and the 'Add key' button is visible next to it. The 'Product key' field contains the value '58-70-5C-40-14-DC-DA-6F-19-D7-F8-B4'. The 'Installation date' is set to '2008-06-19'. The 'Registration key receiver address' is 'toshiba_eu@toshida.com.jp'. The 'Version Info' section shows 'Server version' as '4.00 (8050)', 'Java Version' as 'Sun Microsystems Inc./1.6.0_03', 'DSP version' as '1.00 (616)', and 'OS version' as 'Windows XP'. The 'Optional Information' section shows 'Your region' as 'United Kingdom [GB]', 'Number of Toshiba devices' as '20', 'Number of non-Toshiba devices' as '5', and 'I had a training on EPMS' as 'no'. The 'e-mail address' field is empty. The 'Register' button is disabled, and the 'Change req.' button is active.

2. Enter the registration key that you get in [Registration key].
3. Click [Save].
 - ➡ The license registration is finished.

The screenshot shows the 'Server Settings' dialog box with the 'Registration/License' tab selected. The 'Registration key' field is now filled with a new key, and the 'Add key' button is disabled. The 'Product key' field contains the value '58-70-5C-40-14-DC-DA-6F-19-D7-F8-B4'. The 'Installation date' is set to '2008-06-19'. The 'Registration key receiver address' is 'toshiba_eu@toshida.com.jp'. The 'Version Info' section shows 'Server version' as '4.00 (8050)', 'Java Version' as 'Sun Microsystems Inc./1.6.0_03', 'DSP version' as '1.00 (616)', and 'OS version' as 'Windows XP'. The 'Optional Information' section shows 'Your region' as 'United Kingdom [GB]', 'Number of Toshiba devices' as '20', 'Number of non-Toshiba devices' as '5', and 'I had a training on EPMS' as 'no'. The 'e-mail address' field is empty. The 'Register' button is disabled, and the 'Save' button is active.

6. Searching For Devices

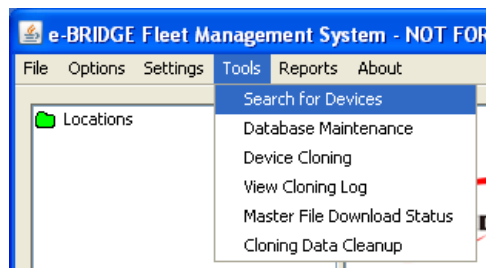
To manage the devices in the system, search devices in your network and add to the tree view.

Searching For Devices And Adding To Tree View

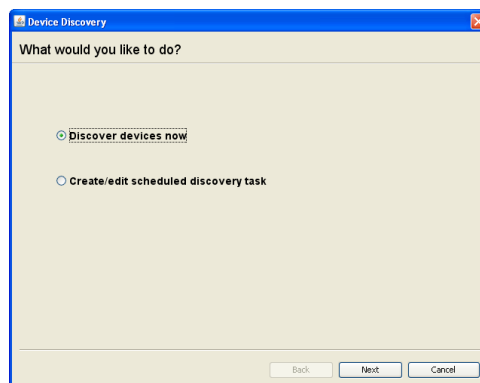
Note This procedure should be performed by logging on with the default administrator login name, “admin”.

1. Select [Tools] - [Search for Devices].

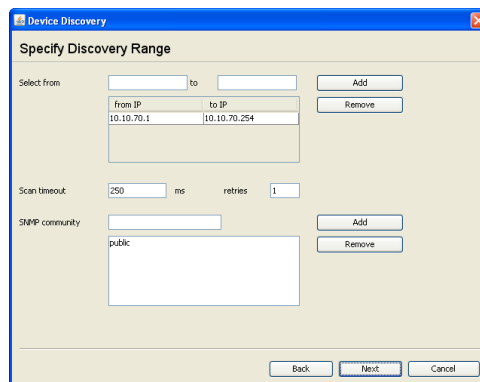
➡ The Search for Devices dialog box appears.



2. Select [Discover devices now] and click [Next].



3. Specify the discovery conditions and click [Next].



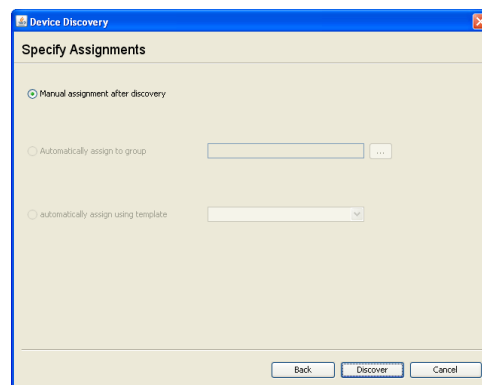
Items	Descriptions
Select from	<p>Enter the first IP address among the range of IP addresses to search.</p> <p>The first IP address of the sub network of the client PC is set as default. This must be entered in IPv4 address format.</p>

Items	Descriptions
To	Enter the last IP address among the range of IP addresses to search. The first IP address of the sub network of the client PC is set as default. This must be entered in IPv4 address format.
Scan timeout	Enter the number of the second to terminate searching when any device is not discovered.
retries	Enter the number of times to re-searching after the timeout.
SNMP community	Enter the SNMP community to search, and click [Add] to add to the list. To remove the SNMP community to be added, select the SNMP community name in the list and click [Remove].

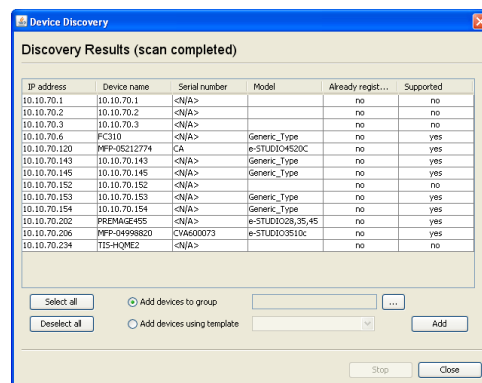
4. Click [Discover].
➡ Discovering devices are started.

Remark

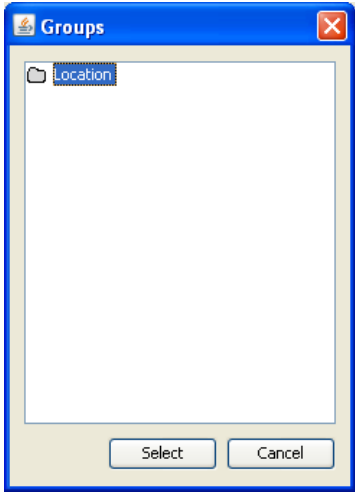
To stop discovering, click [Stop] in the Discovery Result (scan ongoing) screen.



5. When finishing the discovery, the discovery results are displayed.



Items	Descriptions
IP address	The IP address of the device is displayed.
Device name	The device name of the device is displayed.
Serial number	The serial number of the device is displayed.
Model	The model name of the device is displayed.
Already registered	[yes] is displayed for the device that has been already added to the system. If not added, [no] is displayed.

Items	Descriptions
Supported	[yes] is displayed for the device that can be added to the system. If the device cannot be added, [no] is displayed.
Add devices to group	<p>Select this to assign a group to the selected devices in the list. Click [...] to display the Group dialog box and specify an assigned group.</p> 
	<p>Note</p> <ul style="list-style-type: none"> • A group must be assigned to add devices. • Multiple groups cannot be assigned.
Add devices using template	Select this to assign a group and operators using a template. When this is selected, select a template from the drop down menu.

6. Click [Add].

- ➡ The selected devices are added to the system as the monitored devices.

Note

After finishing the license registration, more than the number of devices specified in [Number of requested licenses] at the license registration cannot be added.

Remark

When clicking [Select all], you can select all supported devices in the list.
To cancel the selection, click [Deselect all].

7. Repeat the procedure between step 5 to 6 until all devices to be monitored are added.

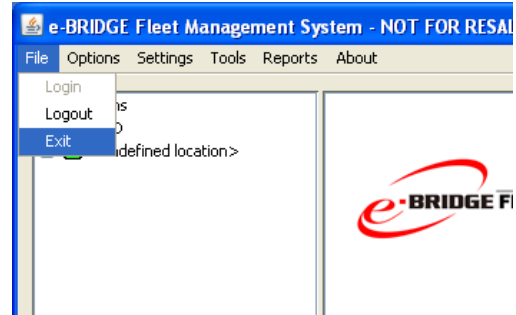
8. When all required devices are added, click [Close] to finish the operation.

7. Exiting Client

Exit EFMS Client.

Exiting EFMS Client

1. Select [File] - [Exit].
 - ➔ EFMS Client is closed.

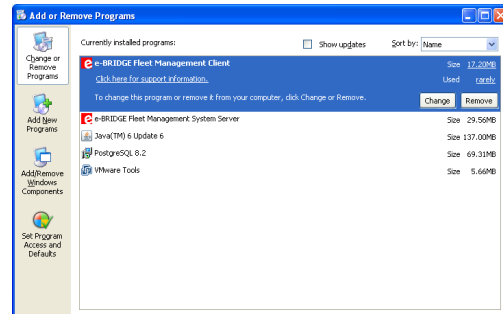


8. Uninstallation

8.1 EFMS Client & Sever Uninstallation

Uninstalling EFMS Client

1. On [Add or Remove Programs] of EFMS Client PC, select [EFMS Client], and click [Remove].
 - ➔ The Add or Remove Programs dialog box appears.

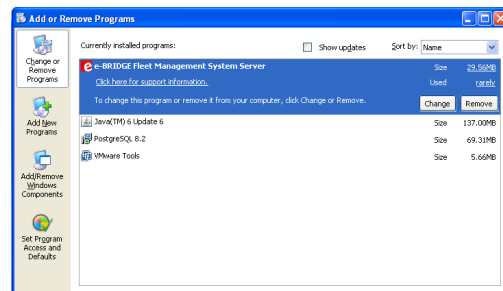


2. Click [Yes].



Uninstalling EFMS Server

1. On [Add or Remove Programs] of EFMS Client PC, select [EFMS Server], and click [Remove].
 - ➔ The Add or Remove Programs dialog box appears.

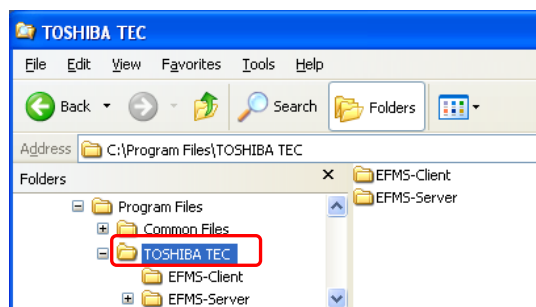


2. Click [Yes].



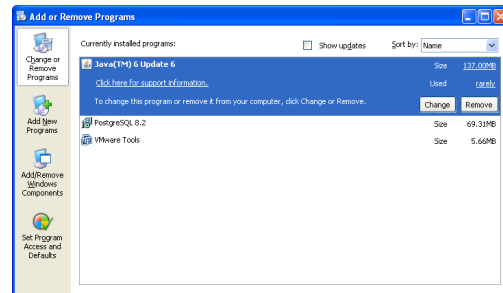
Deleting Program Files

1. Delete each [TOSHIBA TEC] folder located in which Program Files is expanded. [TOSHIBA TEC] folder exists in both PC of Server and Client.

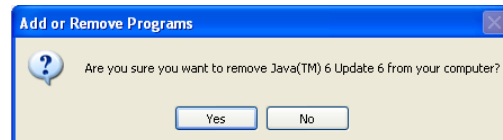


8.2 Java 6 Uninstallation

1. On [Add or Remove Programs] of EFMS Client PC, select [Java(TM)6 Update N], and click [Remove].
 - ➔ The Add or Remove Programs dialog box appears.



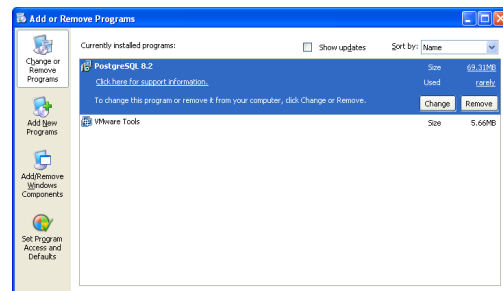
2. Click [Yes].



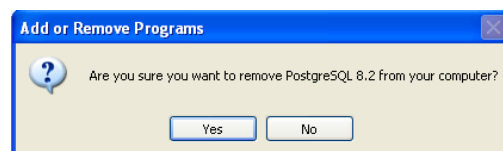
8.3 PostgreSQL Database Server 8.2 Uninstallation

Please refer to the release notes “Database Restore”, if you use PostgreSQL Database server 8.2 with other application.

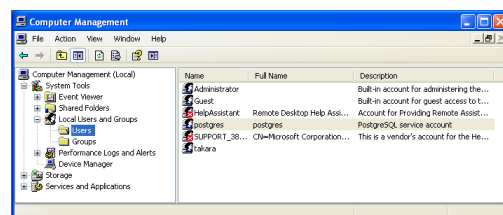
1. On [Add or Remove Programs] of EFMS Client PC, select [PostgreSQL 8.2], and click [Remove].
 - ➔ The Add or Remove Programs dialog box appears.



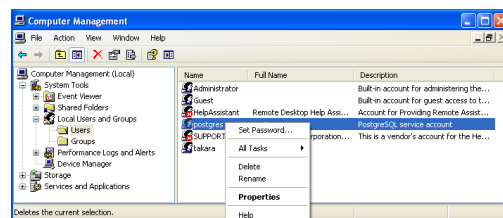
2. Click [Yes].



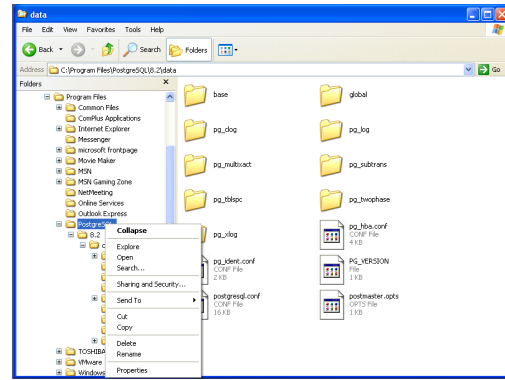
3. On [Computer Management], expand [Local Users and Groups] to select [Users].



4. Right-click [postgres] and select [Delete].



5. Expand [Program Files], and delete [PostgreSQL] folder.



9. Security Advice

In order to ensure no unauthorized access and no leakage of sensitive information may occur please secure the configuration and usage of EFMS Client by the following steps.

1. Personalize the default login accounts “admin” and “service” by changing the default password “toshiba” to any other secure and individual password of your own.
2. Carefully adjust the user roles rights to your own policies.
3. Consider to not including any IP-Address in the counter reports and portal reports that you might configure EFMS to send outside your network by e-Mail.
4. Do not note any password on your desk or besides your computer monitor.
5. Log off from Windows when leaving the computer that EFMS software is installed.
6. Before disposing the storage media of your server or after de-installing EFMS, make sure to securely wipe all remaining data by overwriting with random data. Especially care for removing the EFMS server’s database named ‘eBDM2’.